

# FTR

modern golf cars

## PREMIUM IS THE STANDARD

### TECHNOLOGY TO POWER YOUR GAME

Crafted with the Customer in mind, the FTR Golf Car ushers in a new era of technology and style that captures everyone's attention.

As you settle into the seat, grasp the premium leather steering wheel, and accelerate, you'll be immediately engaged.

FTR Golf Cars are more energy-efficient than traditional carts, allowing you to extend your driving time between charges with a state-of-the-art 370-watt FTR Solar Drive canopy and a sophisticated LiFePO4 Battery Pack.

Even on sunless days, FTR Cars can be plugged into any 110 outlet, reducing your charging time by one-third compared to standard lead-acid batteries.

Maintenance is minimal, giving you more time for yourself!

We aim to streamline your experience, save you time, and lessen your carbon footprint all at once.



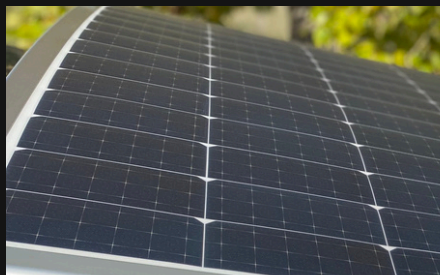
### Premium Seating



Premium Leather Seating offers comfort and function while you play

Available in Two Tone or Black

### Power to Run all Day



FTR GOLF Flagship Solar Drive Roof system provides 370 watts back into your game. Our Cars run longer while keeping your carbon footprint down and your course greener than the rest.

### Stylish Ride



Stock 14" Aluminum Rims in a variety of Designs and Colours. Letting you ride in style and comfort.

Available in Black or Chrome

[www.FTRGolf.com](http://www.FTRGolf.com)

# Technical Specifications

## POWER

- Motor: 5KW AC Motor with 350a Controller
- Battery: 51.2V 105AH 5.376 KWh LiFePO4
  - Charge Efficiency: 99%
  - Cycles @ 80%: 3000
  - Charge Temperature: 0C to 50C
  - Operating Temperature: -20C to 60C
  - Storage Temperature: -20C to 40C
- Charging: Onboard 110v Outlet
  - 3-hour charge time
- Roof Charging: 370 Watt, 8 Amp/hr Max Output
- Range: 50km+ (Depending on Speed, temperature, terrain, and cloud cover)

## SUSPENSION AND TIRES

- Front Suspension: Independent
- Rear Suspension: Horizontal Stabilization and Independent Spring Hydraulic Shocks
- Brakes: Self-Adjusting Mechanical Drum and Regenerative
- Parking Brake: Electromagnetic and Mechanical
- Wheels: 14"

## DIMENSIONS & CAPACITIES

- Estimated Dry Weight: 650 LBS
- Length: 98"
- Width: 48"
- Height: 78-83"
  - Dependent on Rim, Tire and Lift
- Ground Clearance: 5-9"
- Wheelbase: 66"
- Towing Capacity: 1500lbs

## FEATURES

- Lighting: LED Headlights, Brake Lights, and Turn Signals
- Premium Leather Wrapped Steering
- Premium Folding Windshield
- Side Mirrors
- Driver Side Golf Ball & Club Washer
- Passenger Side Cooler
- Club Cover Rain Protector

## ENTERTAINMENT

- Automotive Dash with Bluetooth Stereo
- Dual Front Speakers
- Dual 2.1A USB Fast Chargers
- 12V Aux Charger
- Infographic Display
  - Odometer, speedometer, lights, diagnostics, and Battery Indicator

## WARRANTY

- Frame: LIFETIME
- Battery and BMS: 8-Year
- Canopy Solar System: 5-Year
- Car Parts & Components: See Detailed Warranty

**Incredible  
golf cars.  
Unparalleled  
service.**

We're proud of our golf cars. When you get them on your course, you will be too. More than a comprehensive warranty—although we have that too—FTR Golf Cars come with a promise. When your cars need service, you are our priority. Call us, someone will answer—a real human being dedicated to making your day easier.

